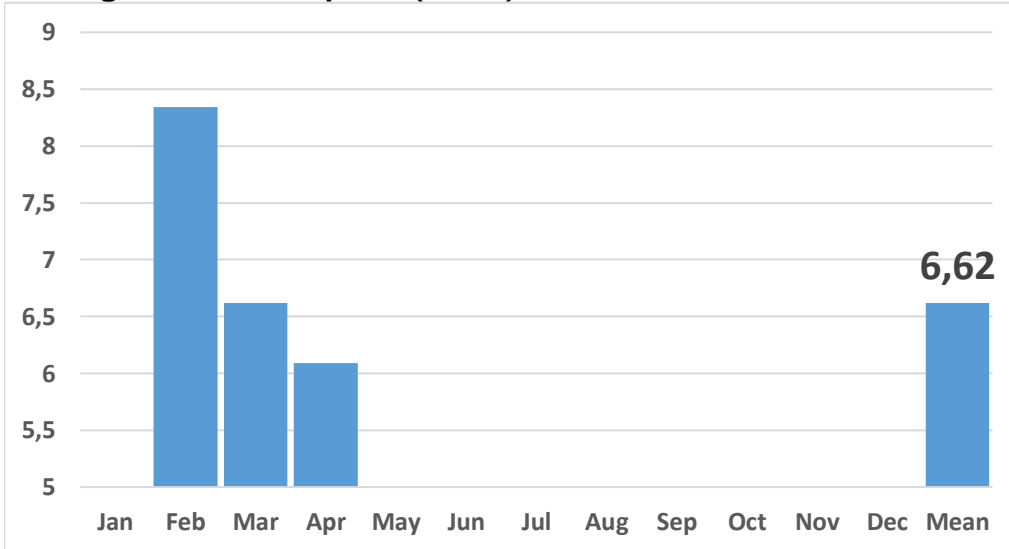


The below mobile data are the ones from the Apikod community users since the launching of the website.

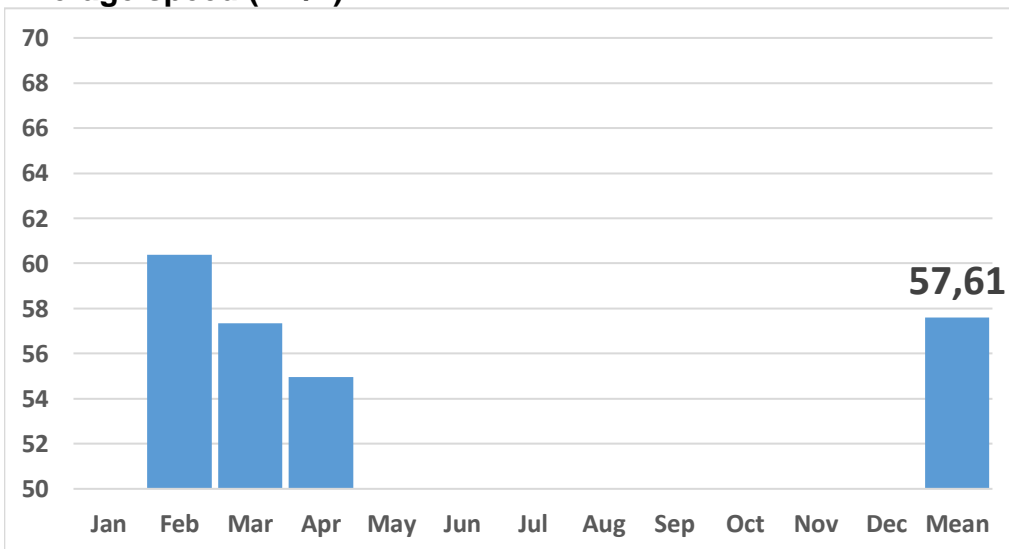
Average car consumption (L/100)



Jan	
Feb	8,34
Mar	6,62
Apr	6,09
May	
Jun	
Jul	
Aug	
Sep	
Oct	
Nov	
Dec	
Mean	6,62

The average consumption takes into account the mileage of the car. A small car with a low consumption doing an high annual mileage will strongly impact the total result compare to a big car with an high consumption and doing a low annual mileage.

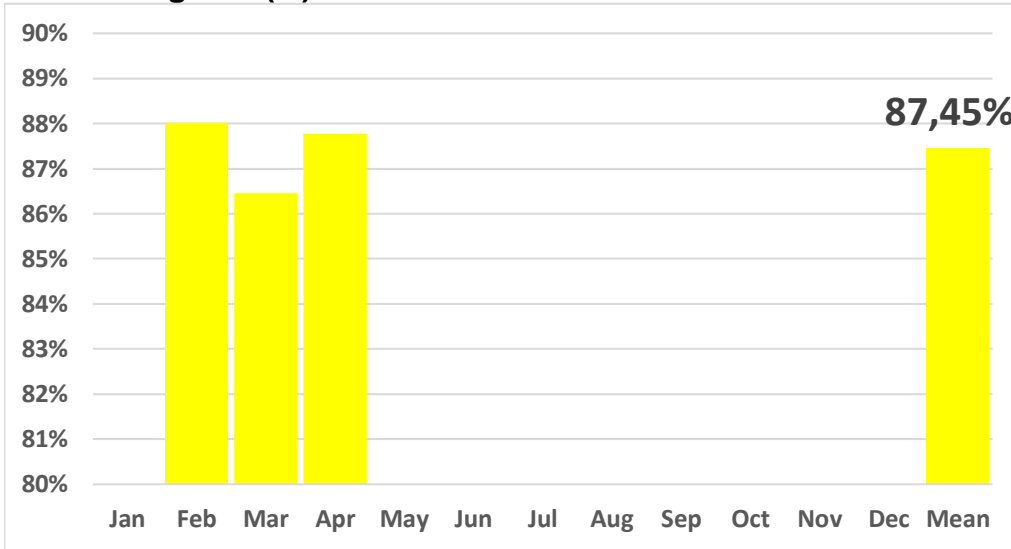
Average speed (km/h)



Jan	
Feb	60,38
Mar	57,34
Apr	54,97
May	
Jun	
Jul	
Aug	
Sep	
Oct	
Nov	
Dec	
Mean	57,61

The average speed takes into account the mileage of the car. A car with a low average speed doing an high annual mileage will strongly impact the total result compare to a car with an high average speed doing a low annual mileage.

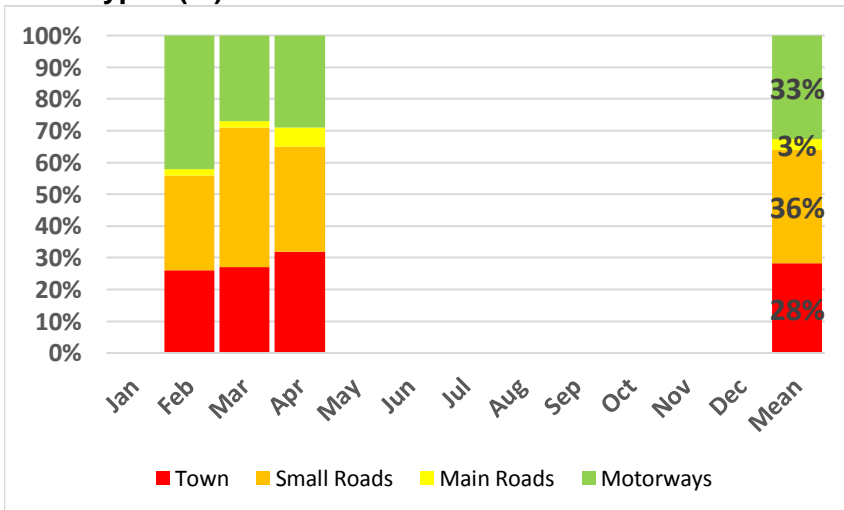
Eco-driving rate (%)



Jan	
Feb	88,00%
Mar	86,45%
Apr	87,78%
May	
Jun	
Jul	
Aug	
Sep	
Oct	
Nov	
Dec	
Mean	87,45%

The average eco-driving rate takes into account the mileage of the car. A car with a low average eco-driving rate doing an high annual mileage will strongly impact the total result compare to a car with an high eco-driving rate and doing a low annual mileage.

Road types (%)



	Town	Small	Main	Motorways
Jan				
Feb	26%	30%	2%	42%
Mar	27%	44%	2%	27%
Apr	32%	33%	6%	29%
May				
Jun				
Jul				
Aug				
Sep				
Oct				
Nov				
Dec	28%	36%	3%	33%
Mean	28%	36%	3%	33%

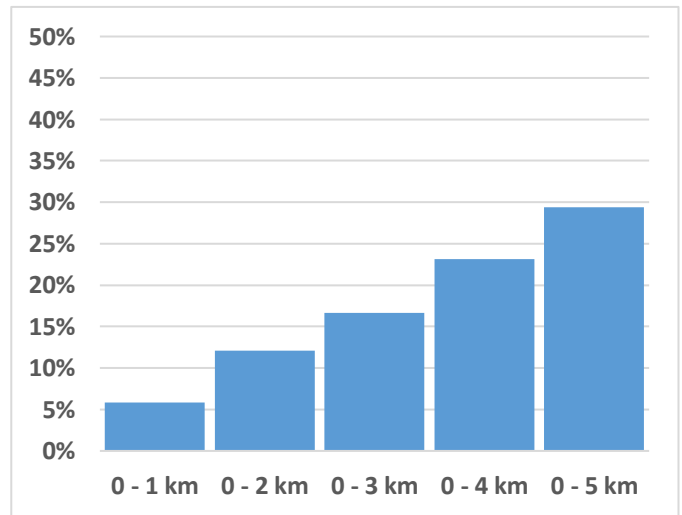
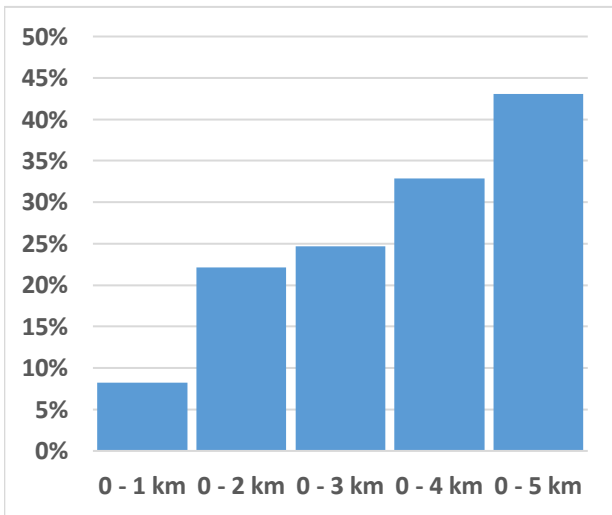
The "town" roads are all roads within town. The "motorways" roads are the high speed toll-free or toll roads. The "main" roads are intercity roads with medium speed. The "small" roads are all the other ones.

The type of roads are recorded only when your smartphone Mobile Data option is activated.

Trip distances analysis (%)

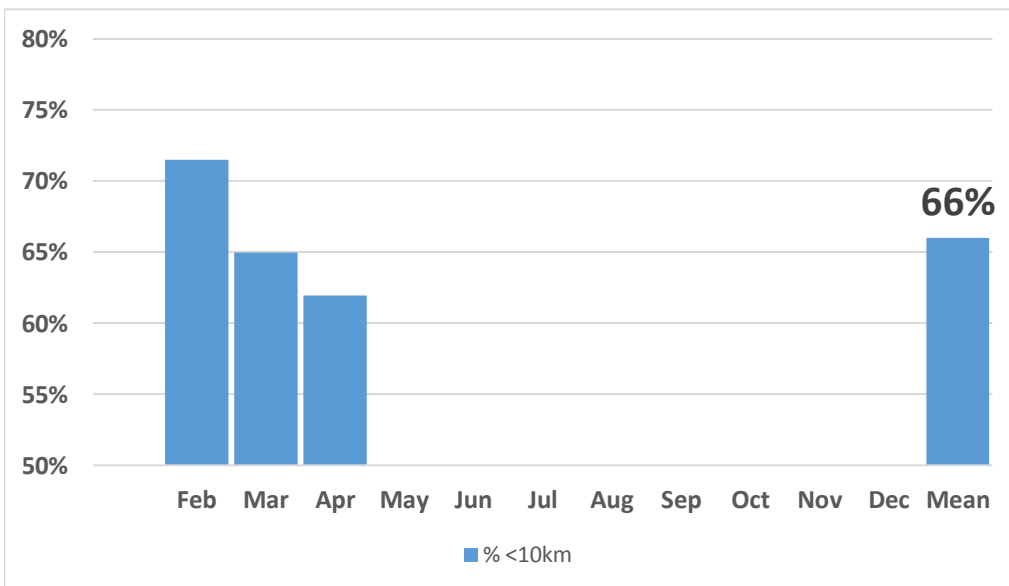
Km	April
0 - 1 k	8,2%
0 - 2 k	22,2%
0 - 3 k	24,7%
0 - 4 k	32,9%
0 - 5 k	43,0%

Km	Average
0 - 1 k	5,8%
0 - 2 k	12,1%
0 - 3 k	16,7%
0 - 4 k	23,1%
0 - 5 k	29,4%



The left graph indicates the percentage of trips per distance over the last month. As an example, in April, 43% of car trips distance is less than 5 kms.

The right graph indicates the percentage of trips per distance over the whole period. As an example, from February to April, 30% of car trips distance is less than 5 kms.



% < 10km

Feb	72%
Mar	65%
Apr	62%
May	
Jun	
Jul	
Aug	
Sep	
Oct	
Nov	
Dec	
Mean	66%

This graph indicates month per month the percentage of trips distance from 0 to less than 10 kms. From February to April 2014, trips distance less than 10 kms represents 66% of trips.